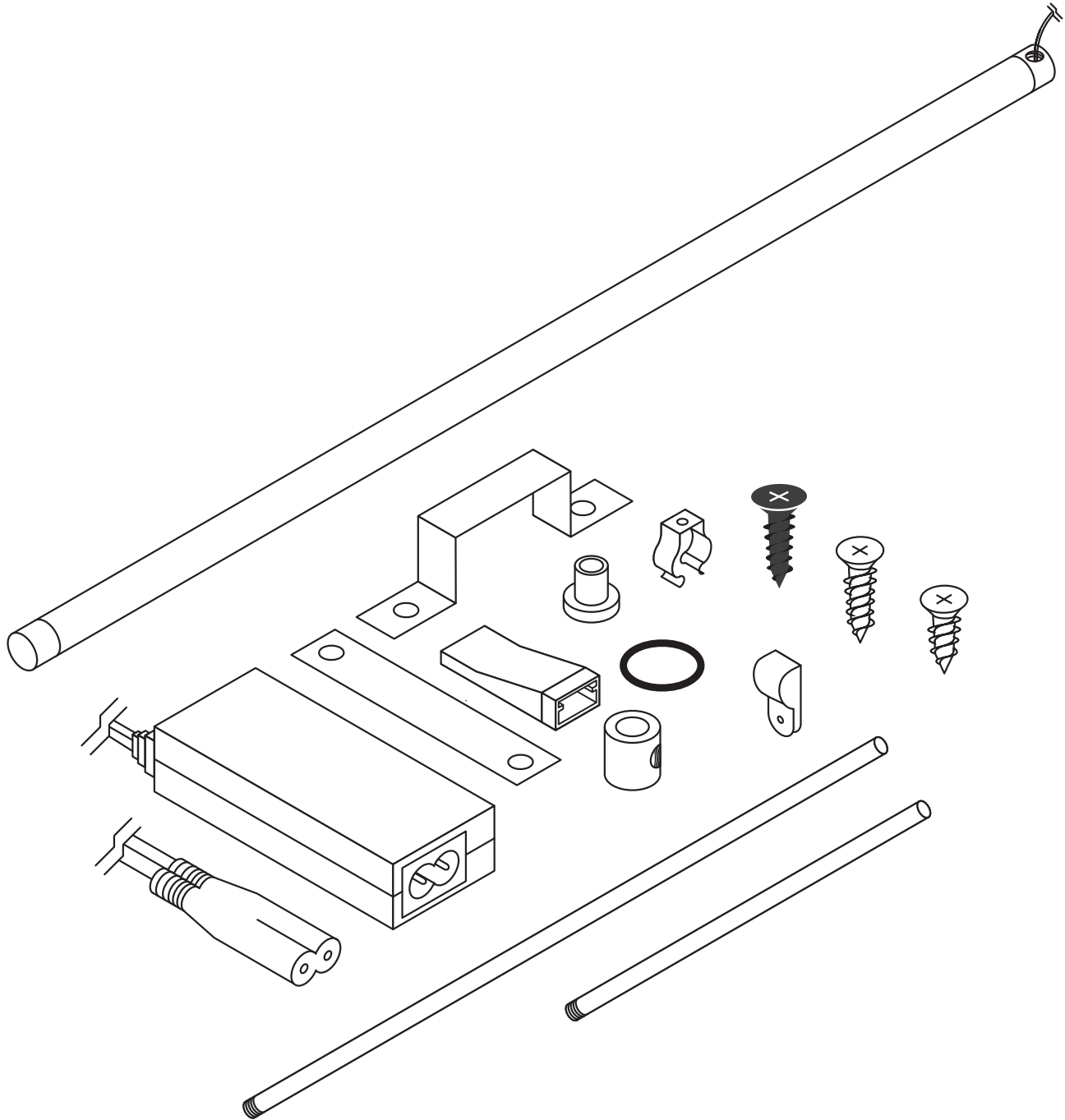


# ASSEMBLY INSTRUCTIONS MANUAL

## 65849 - LED LIGHT KIT FOR METAL FRAMED GLASS DISPLAY WALL UNIT

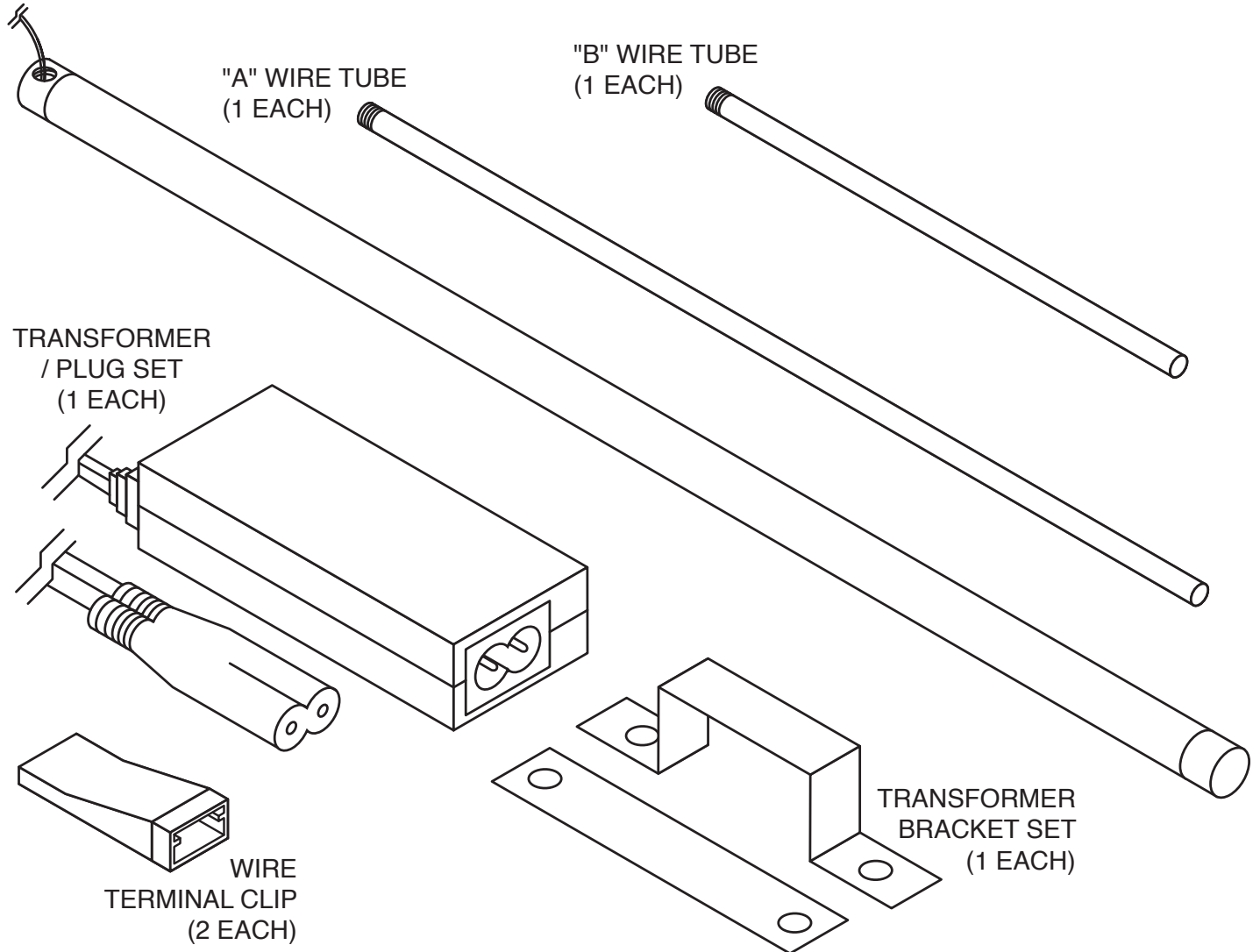


# ASSEMBLY INSTRUCTIONS MANUAL

## 65849 - LED LIGHT KIT FOR METAL FRAMED GLASS DISPLAY WALL UNIT

### PARTS IN CARTON:

LED TUBE  
(1 EACH)



FLAT HEAD  
SCREW #1  
(1 EACH)



FLAT HEAD  
SCREW #2  
(2 EACH)



FLAT HEAD  
SCREW #3  
(3 EACH)



TUBE  
CLIP  
(1 EACH)



LED TUBE  
CLIP  
(4 EACH)



TUBE  
COVER  
(1 EACH)



TUBE  
CONNECTOR  
(1 EACH)



WIRE  
BUNDLE BAND  
(4 EACH)

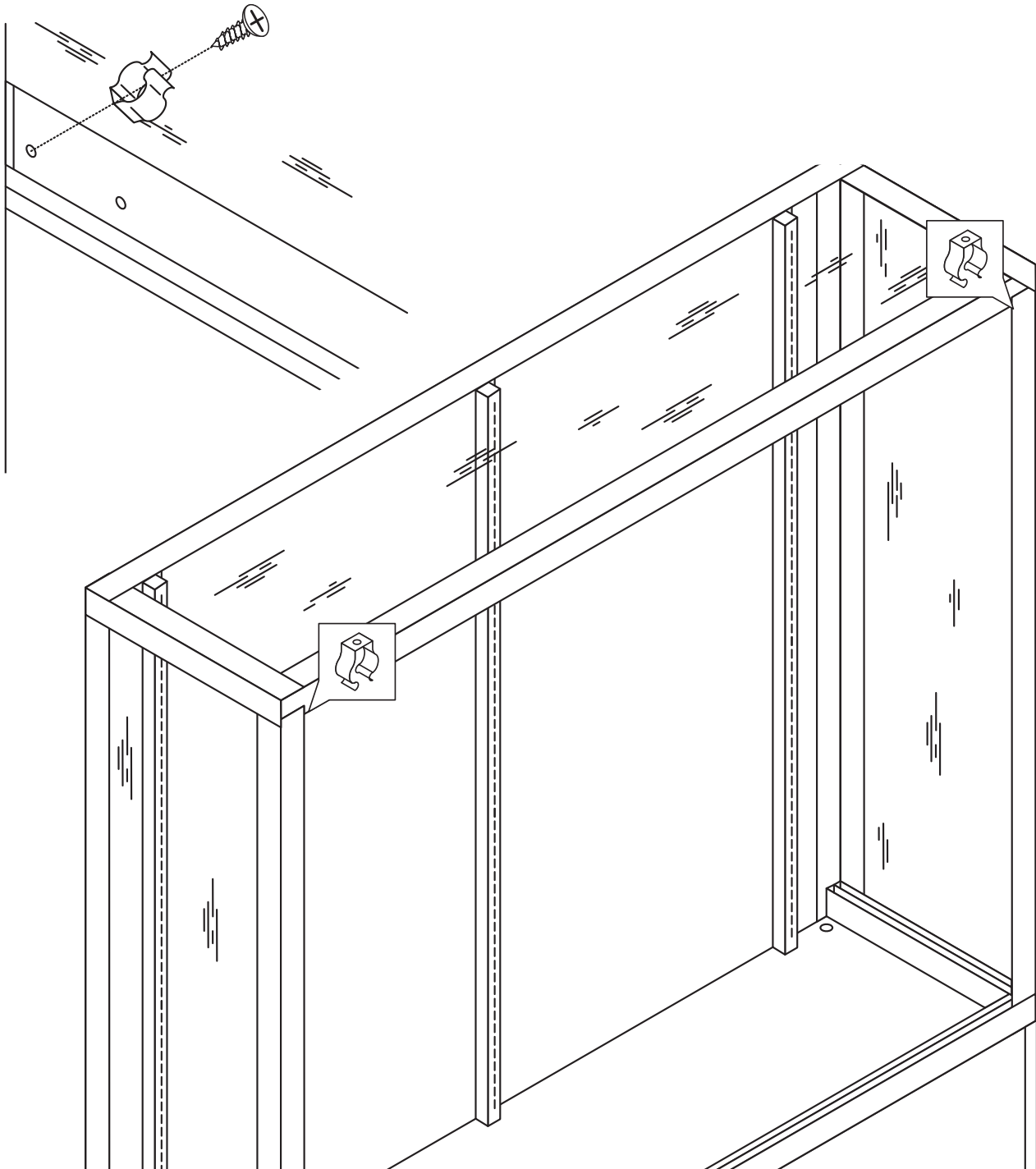
YOU WILL NEED TO SUPPLY YOUR OWN DRILL OR SCREWDRIVER  
FOR INSTALLATION.

# ASSEMBLY INSTRUCTIONS MANUAL

## 65849 - LED LIGHT KIT FOR METAL FRAMED GLASS DISPLAY WALL UNIT

### STEP 1

LOCATE PRE-DRILLED HOLES ON THE TOP CORNERS. PLACE TUBE CLIP INTO POSITION, AND TIGHTEN SCREW. REPEAT ON OPPOSITE CORNER.

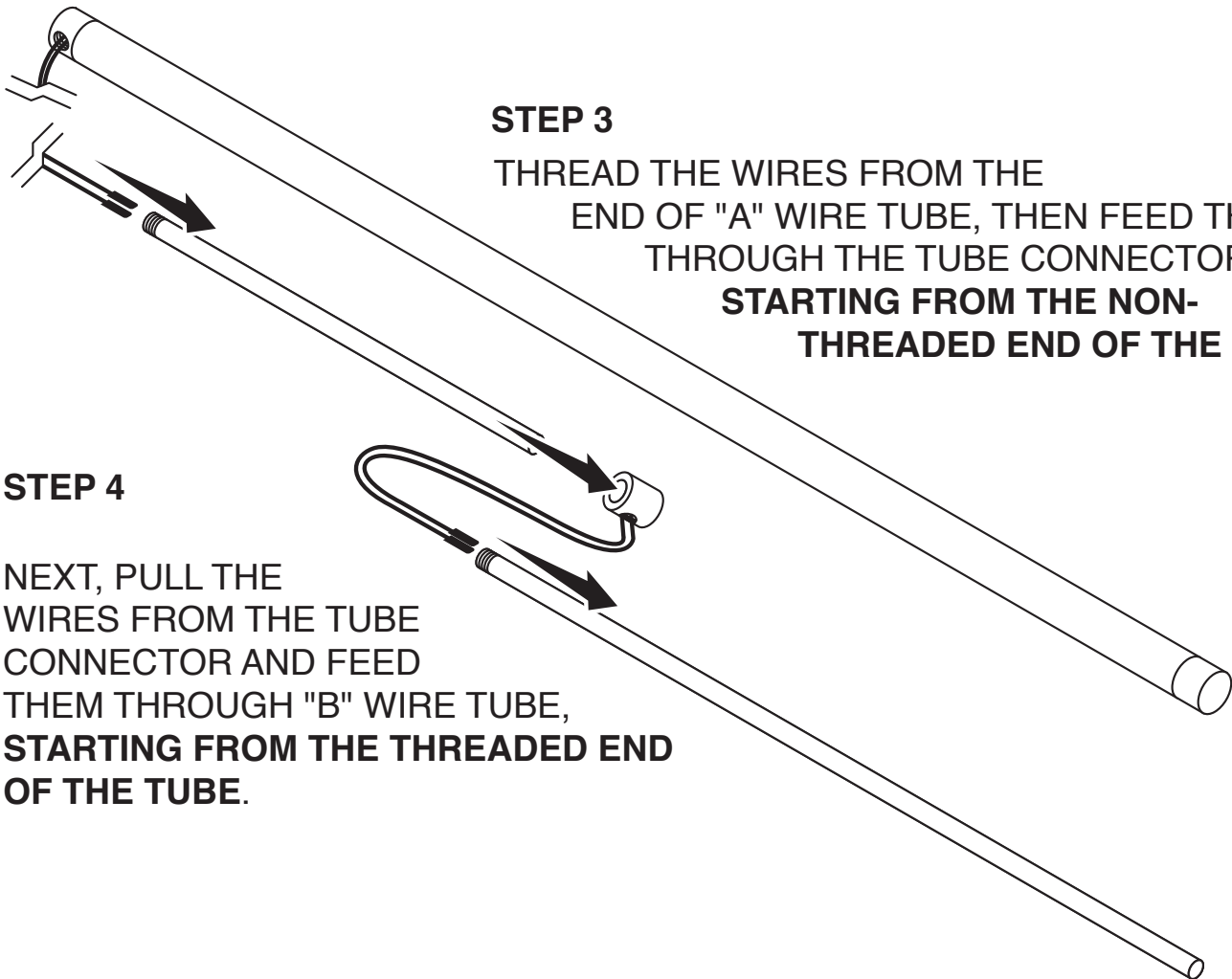


# ASSEMBLY INSTRUCTIONS MANUAL

## 65849 - LED LIGHT KIT FOR METAL FRAMED GLASS DISPLAY WALL UNIT

### STEP 2

TAKE THE WIRES FROM THE LED BAR AND FEED THEM THROUGH "A" WIRE TUBE, **STARTING FROM THE THREADED END OF THE TUBE.**

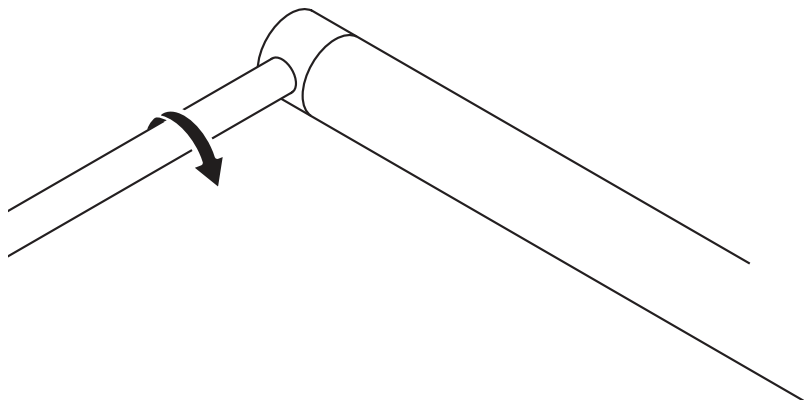


### STEP 3

THREAD THE WIRES FROM THE  
END OF "A" WIRE TUBE, THEN FEED THEM  
THROUGH THE TUBE CONNECTOR,  
**STARTING FROM THE NON-  
THREADED END OF THE TUBE.**

### STEP 4

NEXT, PULL THE  
WIRES FROM THE TUBE  
CONNECTOR AND FEED  
THEM THROUGH "B" WIRE TUBE,  
**STARTING FROM THE THREADED END  
OF THE TUBE.**



### STEP 5

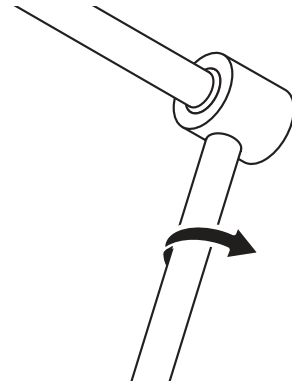
NEXT, SCREW IN THREADED  
END OF THE "A" TUBE INTO  
THE LED TUBE, LEAVE THE  
CONNECTION A LITTLE LOOSE  
FOR ADJUSTMENTS.

# ASSEMBLY INSTRUCTIONS MANUAL

## 65849 - LED LIGHT KIT FOR METAL FRAMED GLASS DISPLAY WALL UNIT

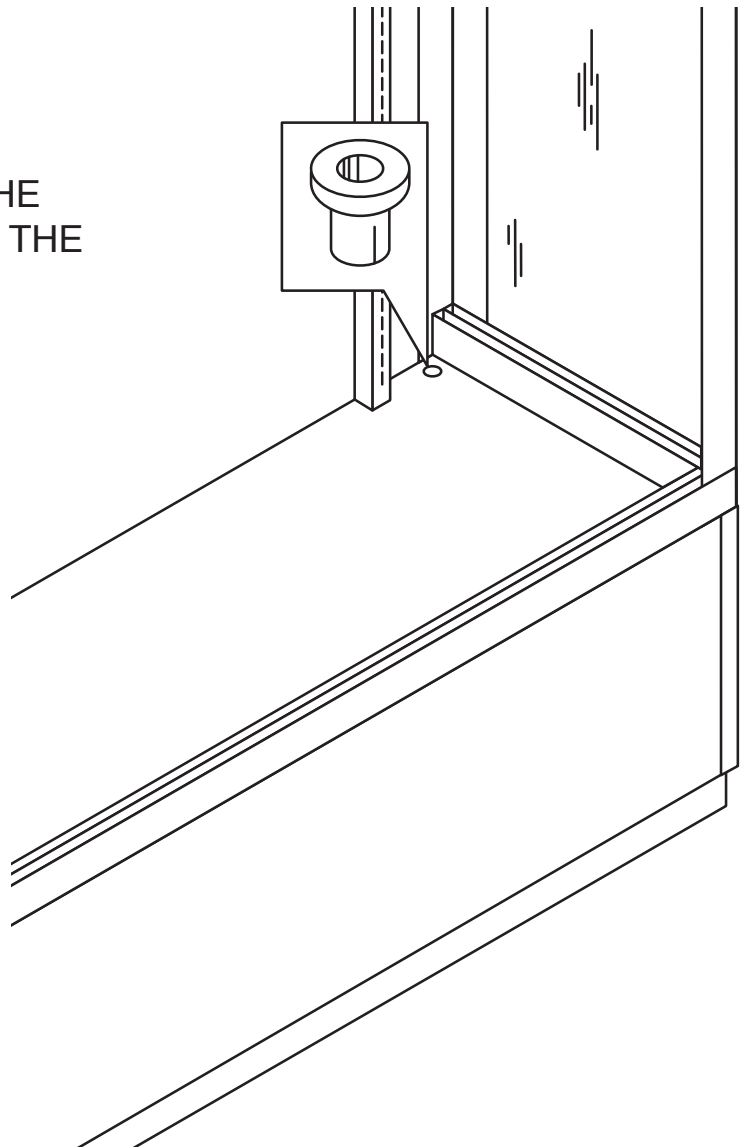
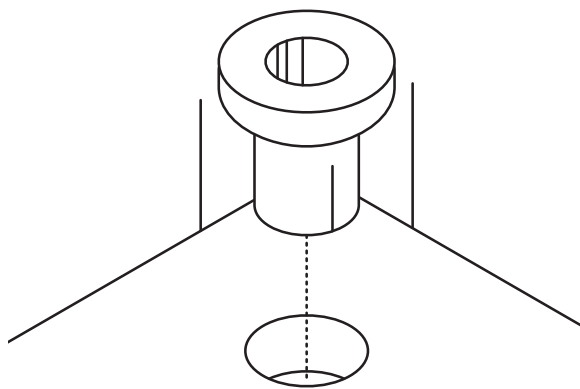
### STEP 6

TAKE THE END OF WIRE TUBE "A" AND PLACE IT INSIDE OF THE TUBE CONNECTOR. NOW THREAD WIRE TUBE "B" INTO THE THREADED HOLE ON THE TUBE CONNECTOR, LEAVE THE CONNECTION A LITTLE LOOSE FOR ADJUSTMENTS.



### STEP 7

PLACE THE TUBE COVER INTO THE PRE-DRILLED HOLE, LOCATED IN THE BACK CORNER OF THE DISPLAY.

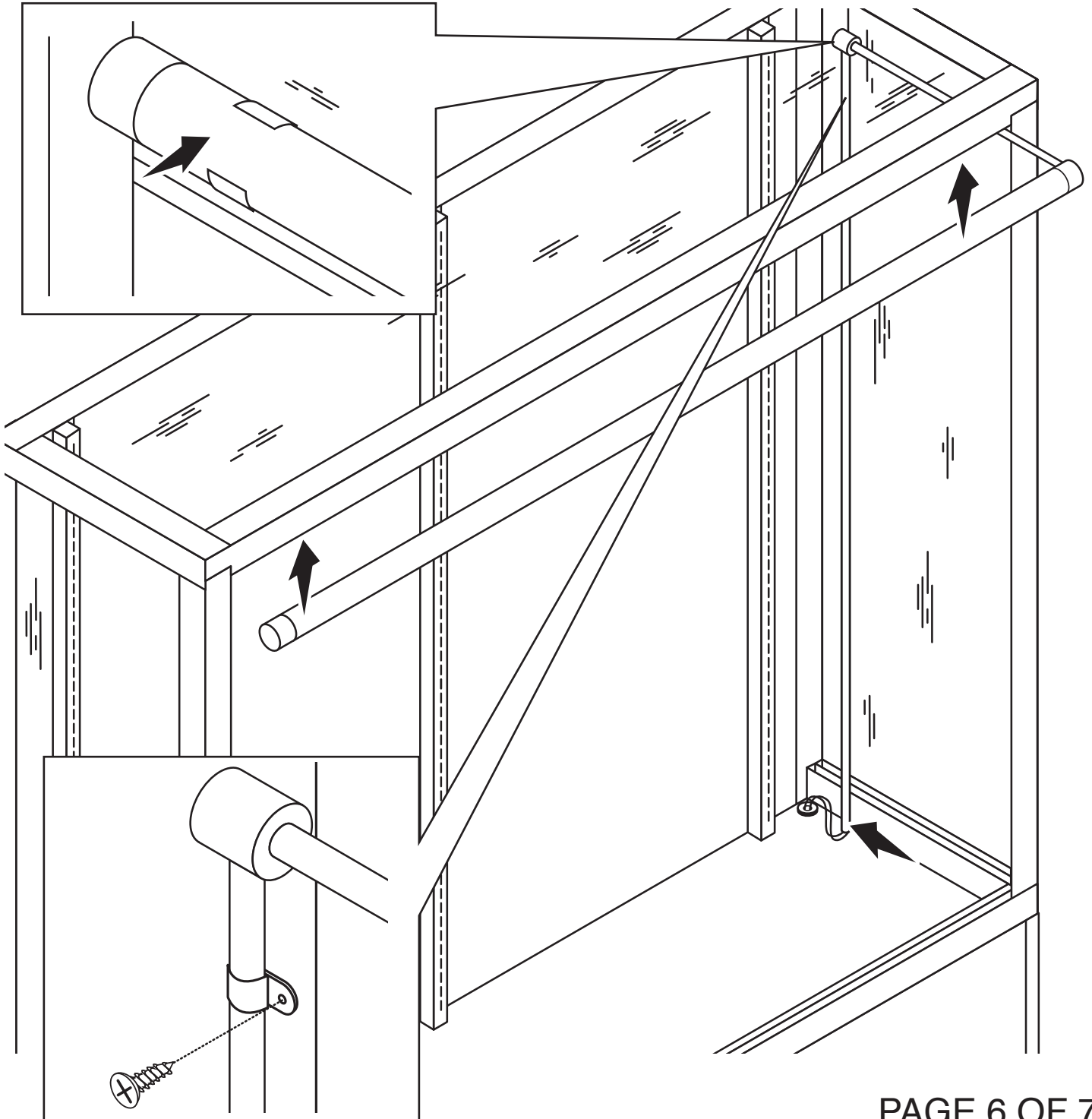


# ASSEMBLY INSTRUCTIONS MANUAL

## 65849 - LED LIGHT KIT FOR METAL FRAMED GLASS DISPLAY WALL UNIT

### STEP 8

CAREFULLY SLIDE IN THE LED TUBE ASSEMBLY INTO THE DISPLAY. ALIGN WIRE TUBE WITH TUBE COVER, SLIDE IN AND CLIP LED TUBE INTO PLACE. ADD THE TUBE CLIP AND SCREW #1 INTO PLACE, THEN TIGHTEN.

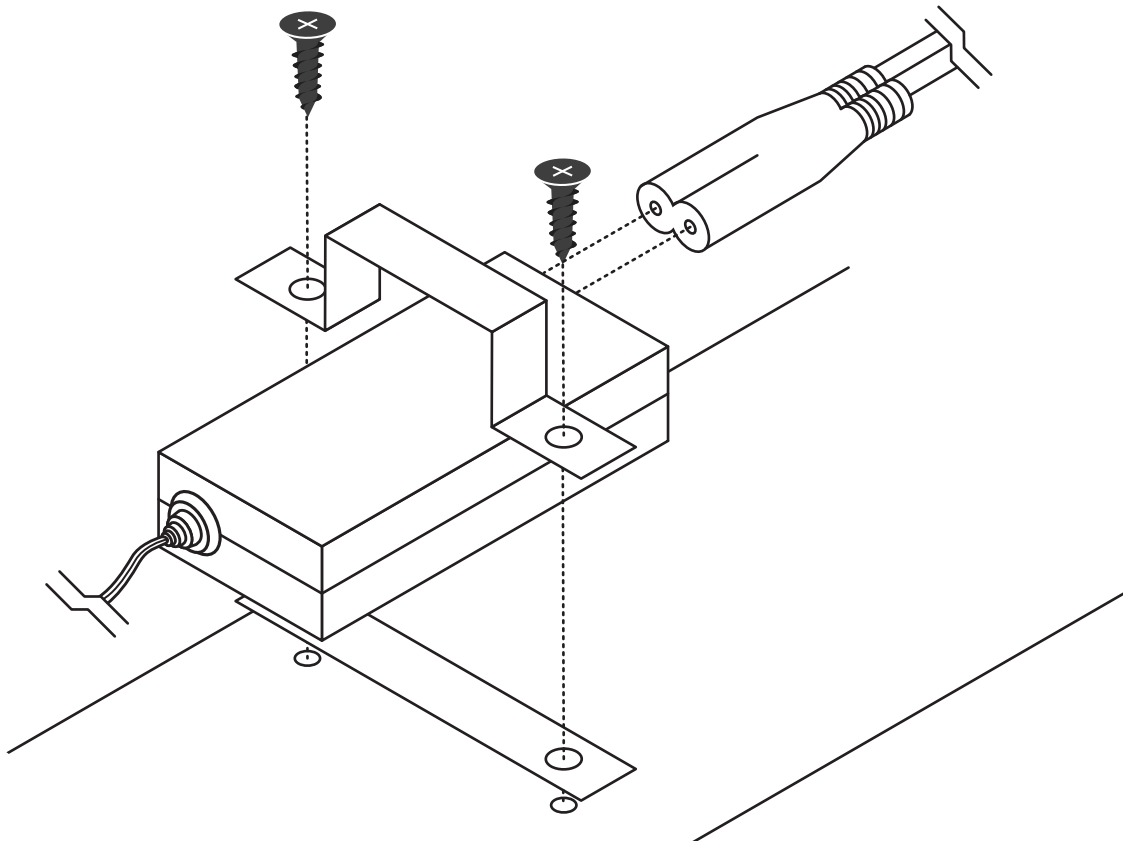


# ASSEMBLY INSTRUCTIONS MANUAL

## 65849 - LED LIGHT KIT FOR METAL FRAMED GLASS DISPLAY WALL UNIT

### STEP 9

TO COMPLETE THIS INSTALLATION, THE DISPLAY WILL NEED TO BE ACCESSED FROM THE BOTTOM. PLACE THE TRANSFORMER BRACKET OVER THE TRANSFORMER AND SCREW (#2 SCREWS) INTO PLACE WITH THE PRE-DRILLED HOLES . **DO NOT OVER TIGHTEN.**



### STEP 10

LASTLY, SLIDE THE BARE WIRES INTO THE WIRE CLIPS, THEN CONNECT. **(NOTE: THE WIRES CAN BE ON EITHER SIDE)** INSTALLATION IS COMPLETE.

