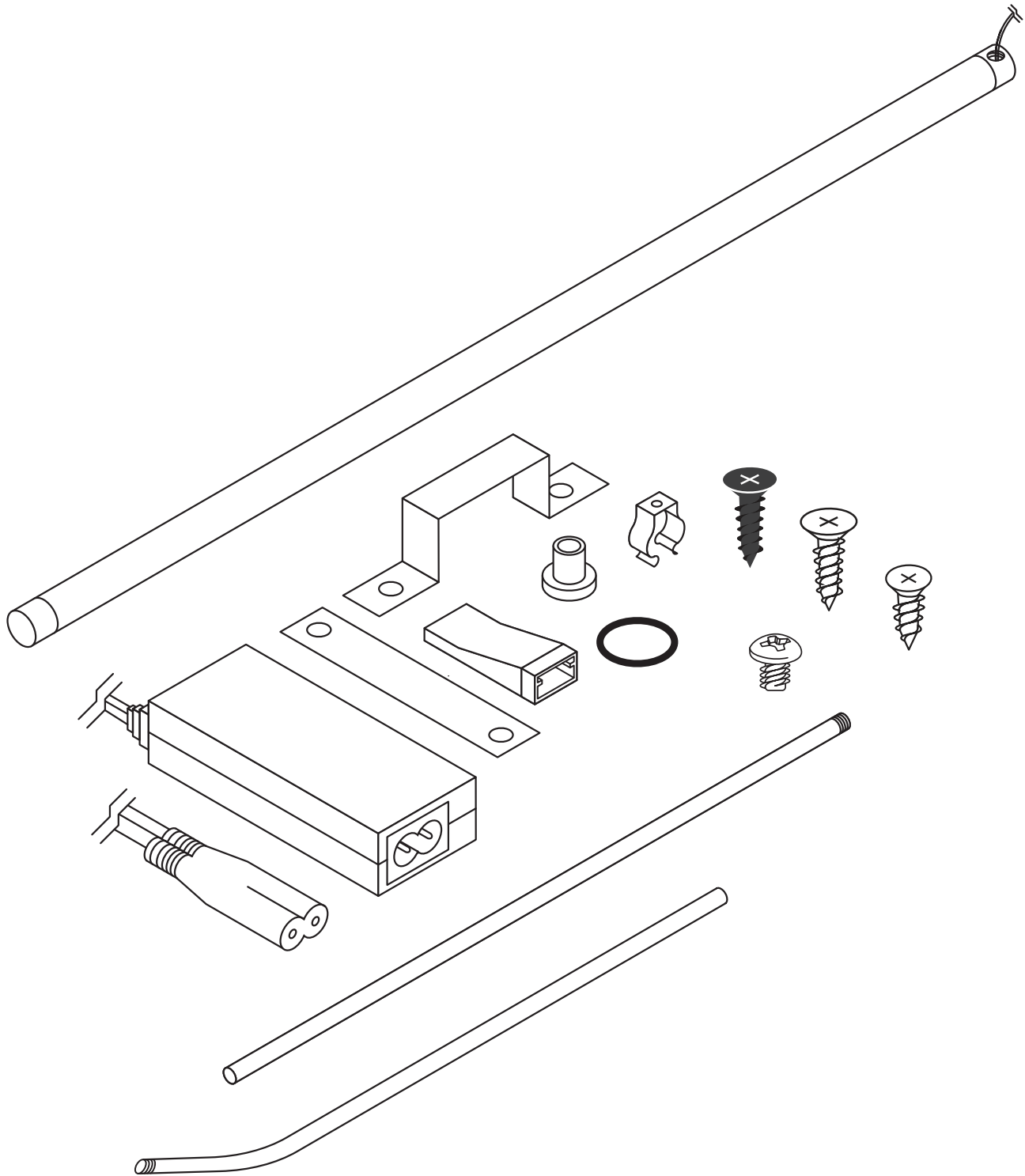


ASSEMBLY INSTRUCTIONS MANUAL

65847 - LED LIGHT KIT FOR 48" WALL UNIT



ASSEMBLY INSTRUCTIONS MANUAL

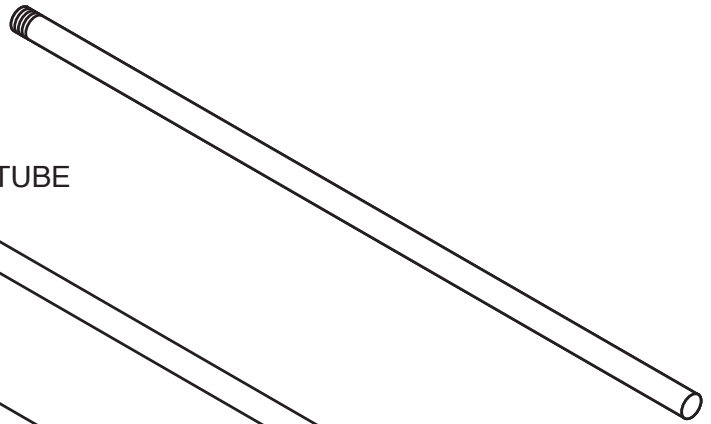
65847 - LED LIGHT KIT FOR 48" WALL UNIT

PARTS IN CARTON:

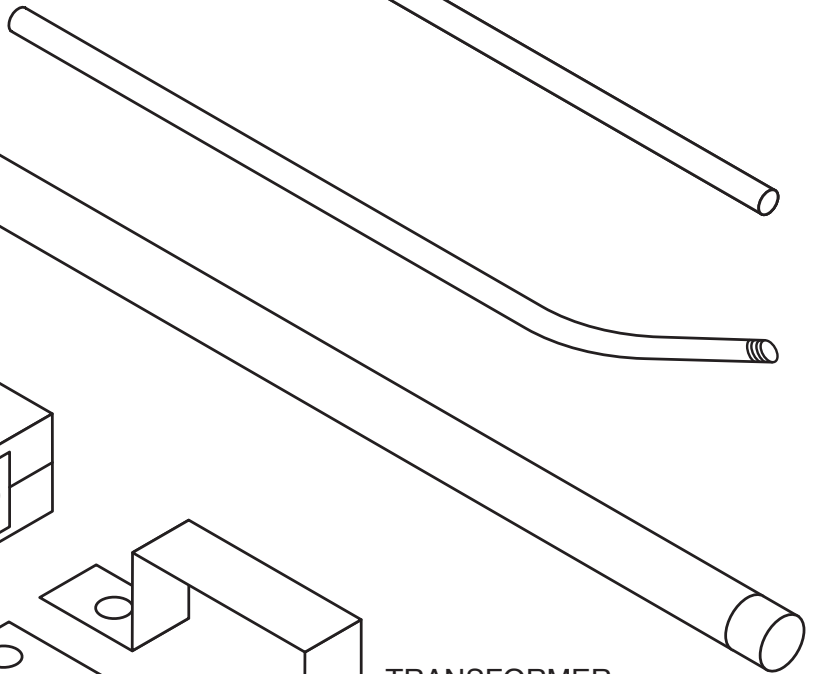
LED TUBE
(1 EACH)



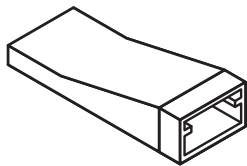
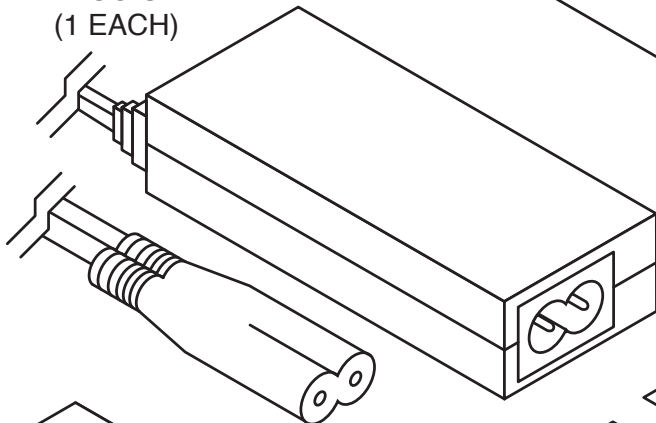
"B" FULL VISION
DISPLAY WIRE TUBE
(1 EACH)



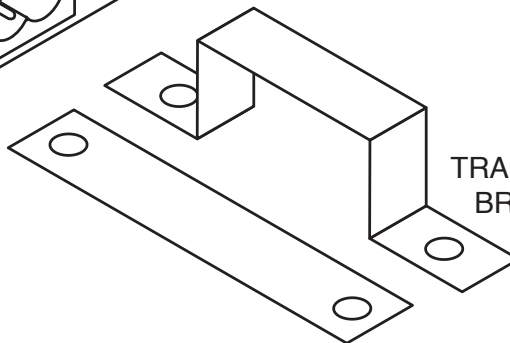
"A" ECONOMY
DISPLAY WIRE TUBE
(1 EACH)



TRANSFORMER
/ PLUG SET
(1 EACH)



WIRE
TERMINAL CLIP
(2 EACH)



TRANSFORMER
BRACKET SET
(1 EACH)



PAN HEAD
SCREW #1
(3 EACH)



FLAT HEAD
SCREW #2
(2 EACH)



FLAT HEAD
SCREW #3
(3 EACH)



LED TUBE
CLIP
(4 EACH)



TUBE
COVER
(1 EACH)



WIRE
BUNDLE BAND
(4 EACH)

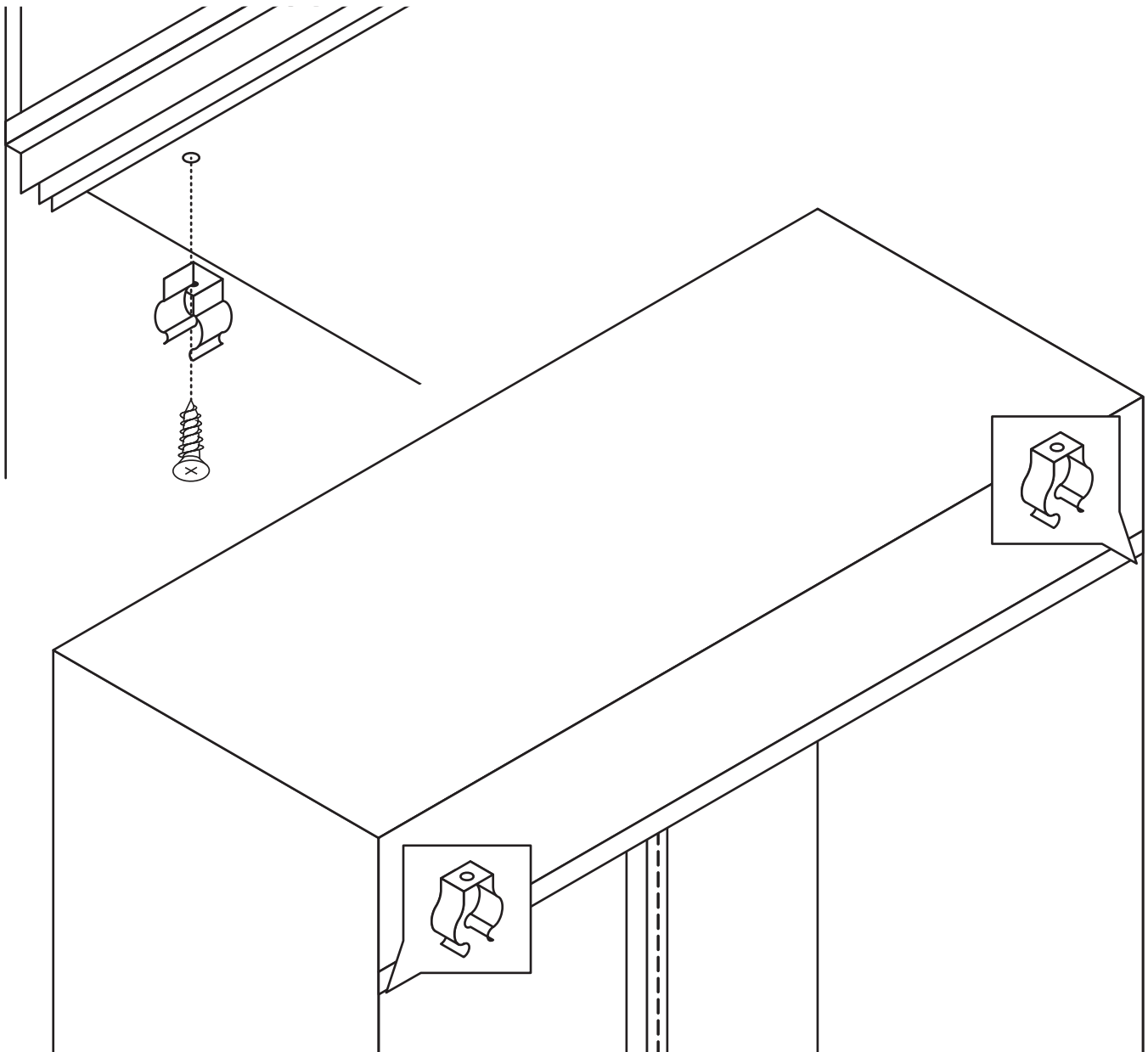
YOU WILL NEED TO SUPPLY YOUR OWN DRILL OR SCREWDRIVER
FOR INSTALLATION.

ASSEMBLY INSTRUCTIONS MANUAL

65847 - LED LIGHT KIT FOR 48" WALL UNIT

STEP 1

LOCATE PRE-DRILLED HOLES ON THE TOP CORNERS. PLACE TUBE CLIP INTO POSITION, AND TIGHTEN #3 SCREW. REPEAT ON OPPOSITE CORNER.

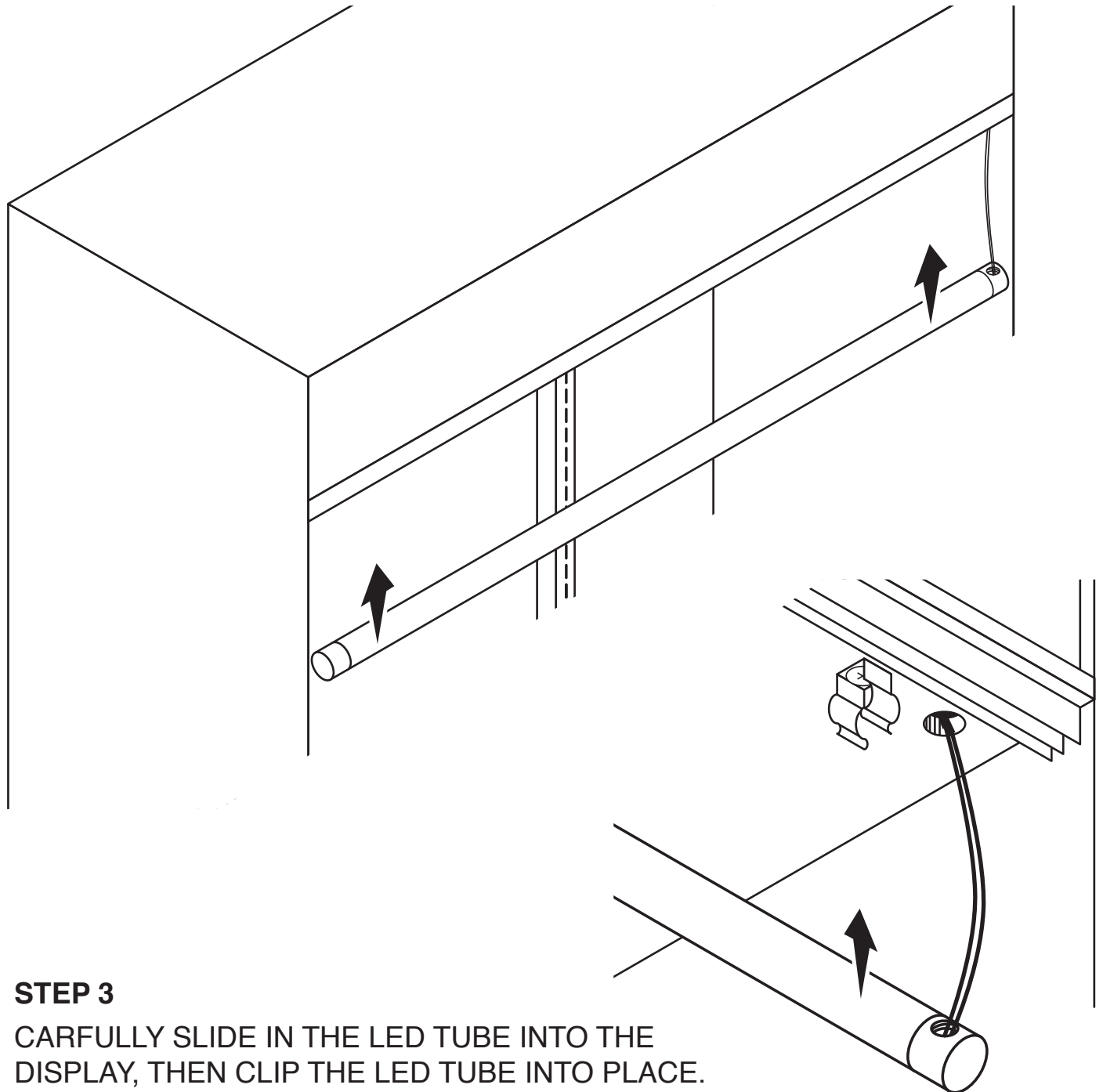


ASSEMBLY INSTRUCTIONS MANUAL

65847 - LED LIGHT KIT FOR 48" WALL UNIT

STEP 2

TAKE THE WIRES FROM THE LED BAR AND FEED THEM THROUGH THE PRE-DRILLED WIRE HOLE.



STEP 3

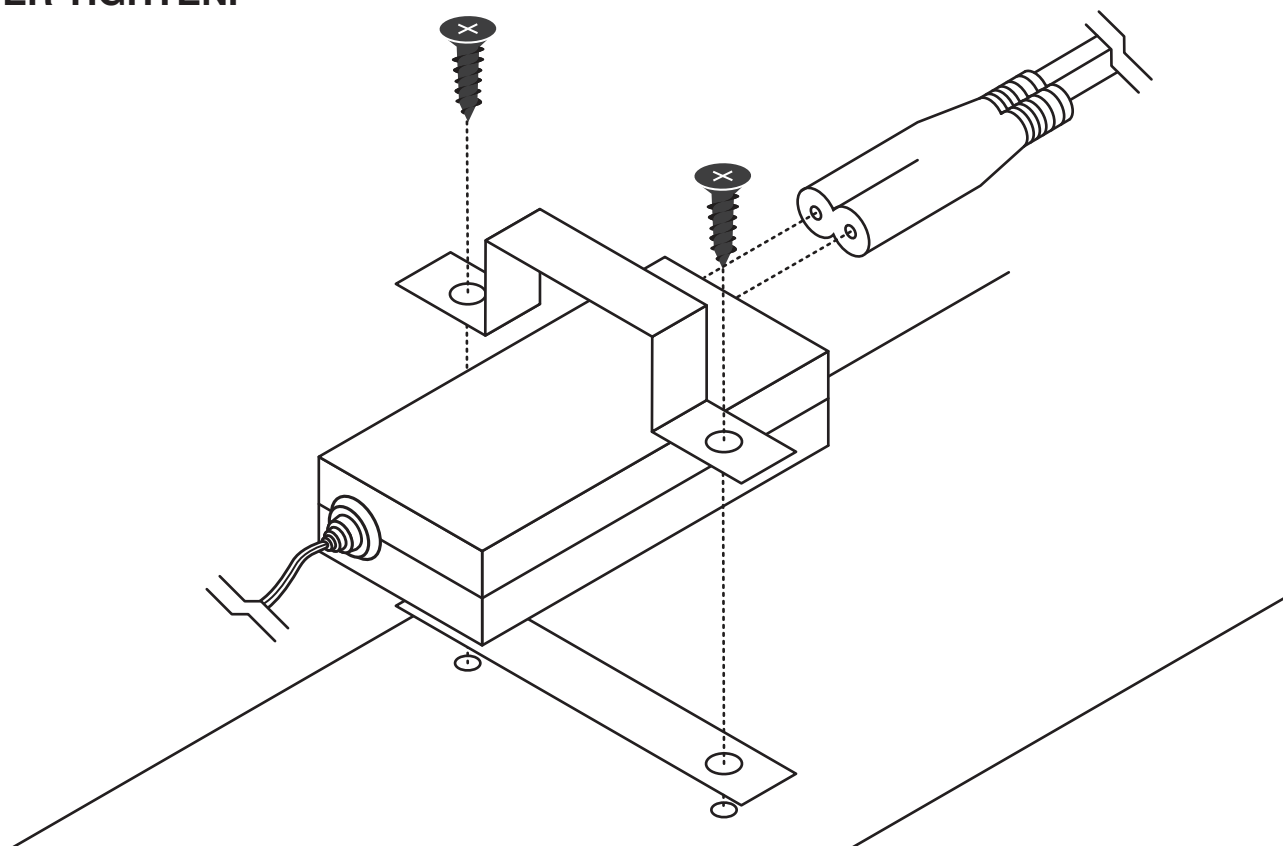
CAREFULLY SLIDE IN THE LED TUBE INTO THE DISPLAY, THEN CLIP THE LED TUBE INTO PLACE.

ASSEMBLY INSTRUCTIONS MANUAL

65847 - LED LIGHT KIT FOR 48" WALL UNIT

STEP 4

PLACE THE TRANSFORMER BRACKET OVER THE TRANSFORMER AND SCREW (#2 SCREWS) INTO PLACE WITH THE PRE-DRILLED HOLES . **DO NOT OVER TIGHTEN.**



STEP 5

LASTLY, SLIDE THE BARE WIRES INTO THE WIRE CLIPS, THEN CONNECT. (**NOTE: THE WIRES CAN BE ON EITHER SIDE**) INSTALLATION IS COMPLETE.

