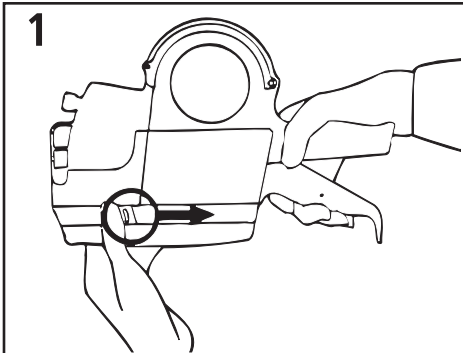
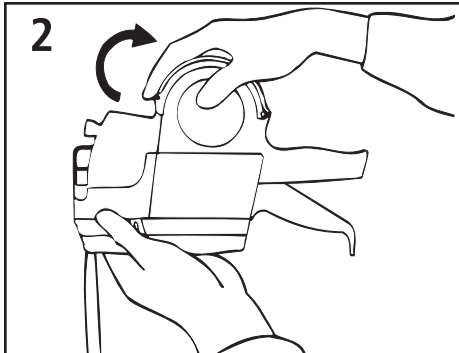


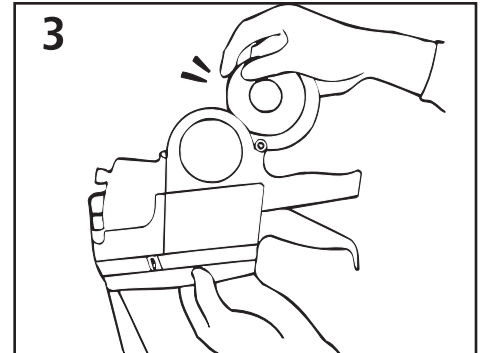
94-502 SSW 2-LINE LABELER INSTRUCTIONS



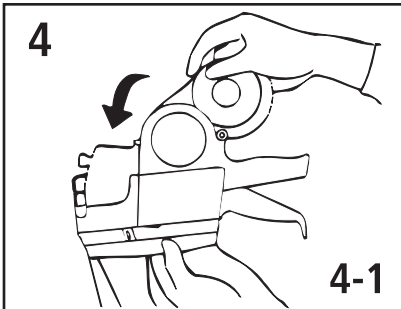
1 Pull back THE BASE-PLATE-OPEN-KEY as shown by arrow.



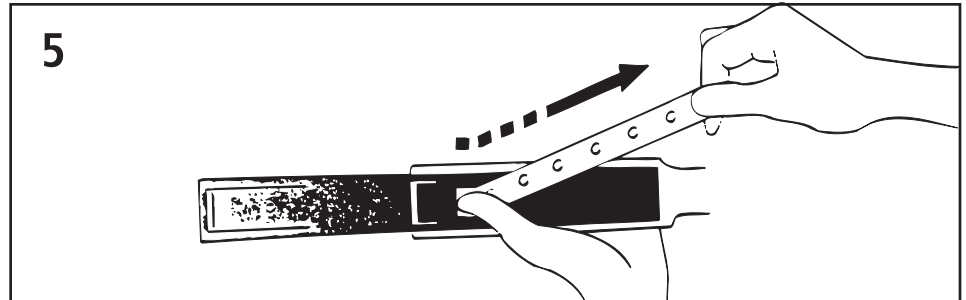
2 Pull up the LABEL-CASE as shown by arrow.



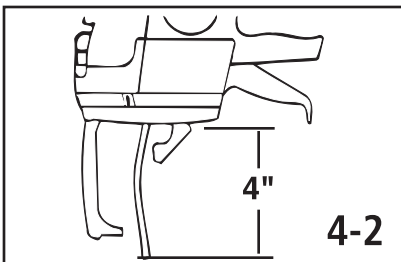
3 Load the label roll onto the LABEL-CASE.



4-1

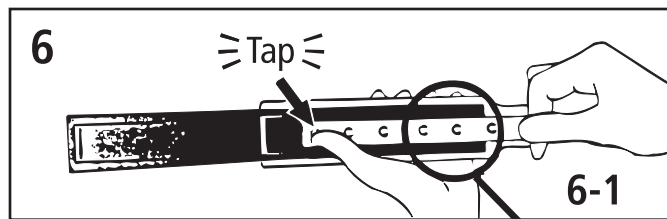


5 Fold back the label roll at the PRINT-PLATE-PIN while pressing the BASE-PLATE slowly.

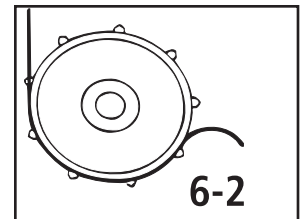


4-2

Insert the label roll through the tunnel (4-1) allowing about 4" length out the bottom (4-2). Then close the LABEL-COVER completely.



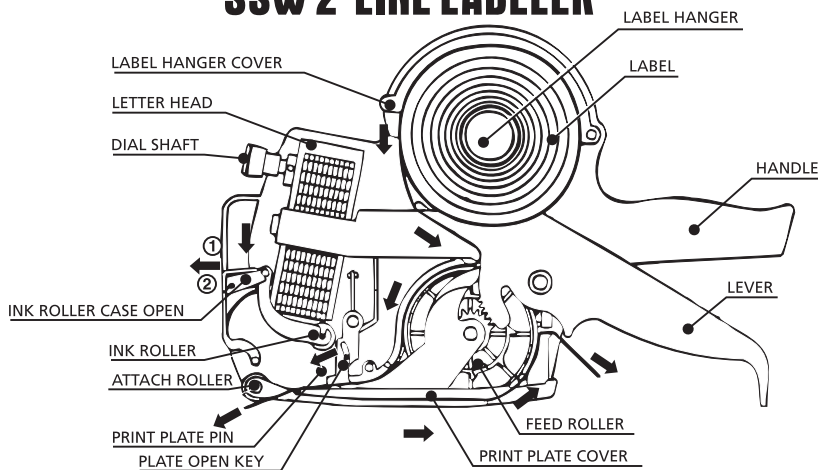
6-1



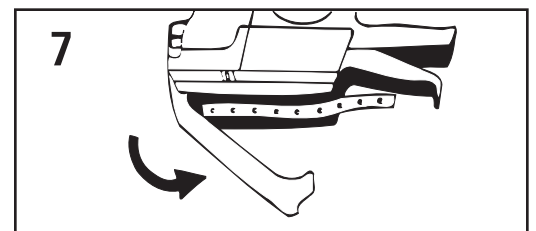
6-2

After lining feed roller with label roll (6-2) carefully close the base plate with a "TAP" sound. (6-1).

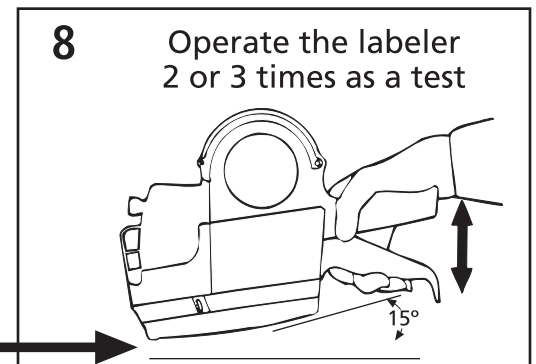
STORE SUPPLY WAREHOUSE SSW 2-LINE LABELER



Squeeze handle to affix label onto merchandise.



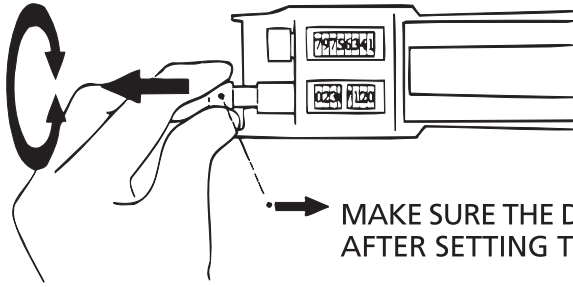
7 Close the BASE- PLATE-COVER



8 Operate the labeler 2 or 3 times as a test

94-502 SSW - 2-LINE LABELER INSTRUCTIONS

Setting the Letter-Head



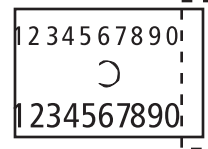
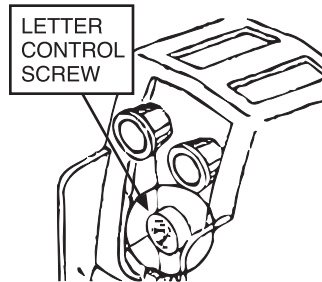
1. Pull or push the DIAL-SHAFT to the desired band.
2. Rotate the DIAL-SHAFT in either direction. When bands are set, push the DIAL-SHAFT forward.

MAKE SURE THE DIAL-SHAFT IS RETURNED TO THE ORIGINAL POSITION AFTER SETTING THE BANDS.

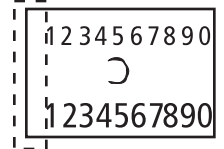
Adjusting the Printing Position

Adjust printing position with LETTER-CONTROL-SCREW on the LETTER-HEAD.

Printing position is moved back and forth by Approx. 1/2".



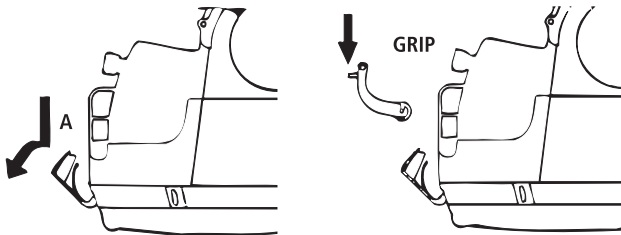
For right printing position, turn the screw to minus (-).



For left printing position, turn the screw to plus (+).



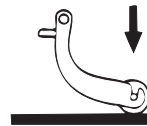
Changing the Ink-Roller



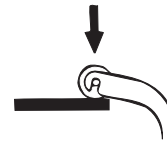
1. Press and pull part A to open the INK-ROLLER CASE.

2. PRESS THE INK-ROLLER-HOLDER in direction shown by arrow to take out the old INK-ROLLER, then insert the new INK-ROLLER per arrow.

TO TAKE OUT



TO INSERT



FOR LABELS, INK ROLLERS — AND ALL YOUR STORE SUPPLIES AND EQUIPMENT, CHOOSE STORE SUPPLY WAREHOUSE. YOUR ITEMS WILL BE SHIPPED TO YOU THE SAME DAY WE RECEIVE YOUR ORDER.